

Welcome to the fourth edition of the Community & Coast newsletter where you'll find the latest updates and information about ETZ Ltd's Community & Coast programme.

In this issue:

- Tullos Playing Fields & Access Improvements
- St Fittick's Church Conservation Works
- Community & Coast Fund Successful Projects

Discover the full Community & Coast programme on [our website](#).

## Community Greenspace Enhancements

As part of our plans to develop a site within the south-eastern area of St Fittick's Park to support energy transition activity, we are committed to making impactful investments that significantly enhance community amenities and access in the remaining greenspace. These community amenity and biodiversity projects are informed by our [Greenspace Use Survey](#) and are being delivered ahead of any occupier-led development on the proposed greenfield site.

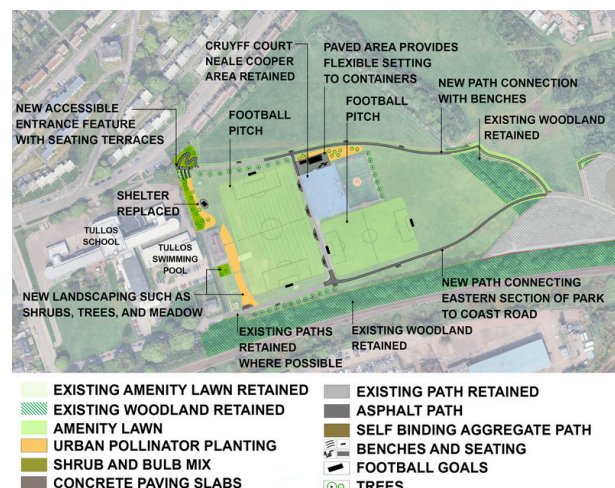
With the East Tullos Burn and wetlands restoration project well underway, we have received planning permission from Aberdeen City Council and started work on two further greenspace enhancement projects. Both are projected to be completed in summer 2026.

### Tullos Playing Fields & Access Improvements

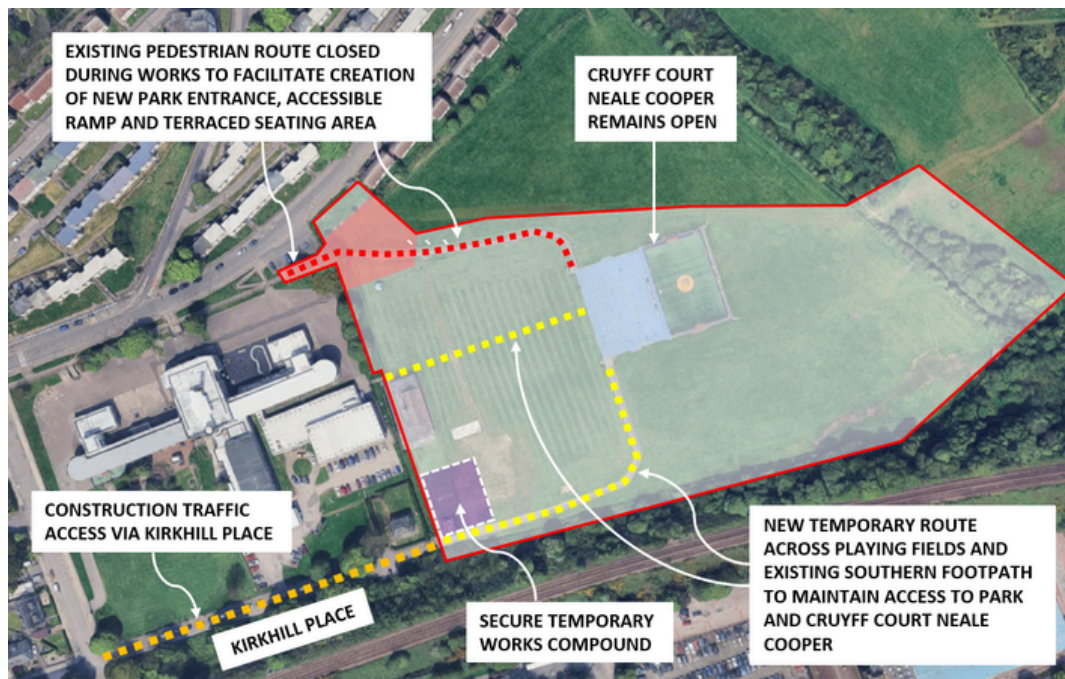
The works underway at Tullos Playing Fields have been co-designed with members of Dee United, the Denis Law Legacy Trust and local young people from the Granite City Speaks youth forum. They will increase opportunities for sport, play and community use.

They include:

- A new accessible entrance from Tullos Primary School
- New paths linking to the wider park and wetland routes
- New seating, a social shelter and improved landscaping
- Two new grass playing pitches with goals
- Benches, picnic tables and terraced viewing areas near the sports pitches and Cruyff Court Neale Cooper



Access to the Cruyff Court Neale Cooper, school and swimming pool carparks will be maintained throughout the works.



[Visit our website for more detailed information about the project](#)

## St Fittick's Church Conservation Works

Conservation works are now underway at St Fittick's Church, a 12th-century scheduled monument, to restore its historic character, improve its visual appearance and access, and help protect the church for future generations.

The overall vision for this project is to secure the long-term future of St Fittick's Church as a well-maintained historic landmark, able to tell the story of the place clearly and allow people to feel safe and confident when enjoying it.





## Q&A Conservation Accredited Architect RIBA RIAS ARB and founder of EALA Impacts CIC

The architect led the investigation works at St Fittick's Church that took place in September 2025, under the supervision of Historic Environment Scotland and designed the conservation works plans.

### What can local people expect to see/gain from these works?

*"Part of the works will be to re-open some of the existing windows and doors that were blocked up. Doing so make it easier for people to see into the church as they are walking past. Additional interpretation material will be added as well to tell the story of the place more, following findings from the archaeologist. The ongoing maintenance will be easier due to the work being done with appropriate lime-based materials which will last longer and not damage the underlying stonework like the cement was doing."*

### What is the vision being taken forward?

*"A well-maintained monument, able to tell the story of the place, with existing windows and doors opening to making people feel safe and confident to enjoy it."*

The conservation works will:

- Remove modern cement materials and replace them with traditional lime harling.
- Repair and consolidate stonework, including the bell tower.
- Improve visibility into the church and restore its historic appearance.
- Add new interpretation to help tell the story of the site.



[Click here for more details about the project](#)

## Planning Update

Find out about our latest planning updates [here](#).

# ACVO Community & Coast Fund Update

Now in its second year, the Community & Coast Fund is providing grants to 15 local organisations to deliver community led initiatives that will benefit residents across Torry and Cove.



Delivered in partnership with Aberdeen's Third Sector Interface, ACVO TSI, ETZ Ltd's Community & Coast Fund aims to empower local groups by providing targeted grants to support initiatives that respond to community needs ranging from youth support to wellness and skills development, as well as heritage preservation, sustainability and improving biodiversity.

From a sensory room dedicated to children with additional needs at Charleston School, to Torry Men's Shed plans to strengthen its community space where men can meet and learn new skills, we are delighted to continue supporting projects that make a difference for people in Torry and Cove and empower groups to turn great ideas into reality.

The fund has now supported 31 local projects, with total investment approaching £200,000.

[Find out more about the 15 projects in the latest round of the fund](#)

## The Six Pillars of Community & Coast



**JOBS & SKILLS**



**WELLNESS & PLAY**



**NET ZERO**



**YOUNG PEOPLE**



**HERITAGE & PLACE**



**BIODIVERSITY**