

Proximity

Collaboration | Decarbonisation | Transformation | Prosperity

Peterhead Shaping the Energy Transition

This report has
been prepared
by the Peterhead
Energy Transition
Forum (PETF)

A shared vision for the energy transition, demonstrating the crucial role Peterhead will play in the decarbonisation of Scotland.



2025 – 2040

Shaping the Energy Transition: A Foreword

At the heart of Peterhead's success is its proud community where businesses, residents, and organisations collaborate to drive positive change. Through investment, strategic partnerships, and ongoing community engagement, Peterhead is positioning itself as a forward-thinking coastal town, ready to seize future opportunities and enhance the wellbeing of all who live and work there.

The town partners, including public sector organisations, community groups and industry leaders, are actively shaping the 'Peterhead 2040' plan. Couple this with the extensive pipeline of energy transition projects that are being proposed, the region is uniquely positioned to lead the way as Scotland, and the UK, transition towards Net Zero..

The Aberdeen & Grampian Chamber of Commerce's 2025 Investment Tracker has projected that over £22 billion worth of energy-related investment will be channelled into the North East of Scotland over the next ten years. As one of Aberdeenshire's most northern towns, Peterhead is strategically located and a prime location for energy sector investment. With its existing strong, diverse skill set and supply chain capability, the area is clearly ready for the journey of growth and transformation.



Through the collaboration of local stakeholder organisations, the Forum promotes beneficial investment and business opportunities to the region and equips the local workforce and regional supply chain to deliver these projects. These opportunities will enable the people of Peterhead to share the benefits of a just transition and ensure long-term prosperity for generations to come.

While challenges remain, data shows that not everyone in the community benefits equally from the town's dynamic and diverse economy. However, Peterhead's pivotal role in driving economic growth presents real opportunities to create a more inclusive and prosperous future. Through collective effort, commitment and support of this Vision, together we can accelerate this transformation, ensuring a successful just transition by harnessing the potential of our people and Peterhead's rich heritage to shape the energy transition.

Seamus Logan, Member of Parliament for Aberdeenshire North and Moray East.

Peterhead Energy Transition Forum

The Forum comprises a group of Peterhead-focused stakeholder companies, collectively working to enable mutually beneficial domestic and inward investment activity, resource and plans. The Forum encourages inclusive and open dialogue in meetings in a trusted environment.

The Forum is supported in its aims and objectives, including this Vision, by Scottish Enterprise.



Forum Companies

- Aberdeenshire Council
- ASCO
- Dales Engineering Services
- ETZ Ltd
- Invest Aberdeen
- JBS Group
- Maritime Developments Ltd
- Peterhead Port Authority
- Score Group
- Scottish Maritime Academy (part of NESCoI)
- SSE Thermal
- SSEN Transmission
- Storegga



With over £22 billion worth of energy-related investment expected to be channelled into the North East of Scotland over the next ten years, the opportunity for Peterhead has never been greater.

Vision Contents

- 5 Peterhead's Energy Transition Vision
- 9 Peterhead's Leading Energy Transition Players
- 19 Peterhead's Educations, Skills & Enterprise Offering
- 23 Peterhead's Project Pipeline
- 29 Scale of the Opportunity
- 32 Local Economic and Community Development
- 35 Catalytic Investment for Transformation
- 38 Key Opportunity Areas
- 43 The Path Forward
- 44 Contact Us

Peterhead's Energy Transition Vision

Photo: Peterhead Port Authority



Peterhead's direct access to the North Sea, existing energy infrastructure, and port facilities make it particularly well-suited to delivering offshore wind, carbon capture and storage (CCS), hydrogen and decommissioning and recommissioning opportunities.

Recognising its capacity to deliver towards Scotland and the UK's Net Zero ambitions, Peterhead's business landscape is home to several industry-leading companies with a strong pipeline of projects planned for the region. In particular, Peterhead is well positioned to target 30 gigawatt (GW) of fixed, and especially floating, offshore ScotWind projects and 5.4GW of the Innovation and Targeted Oil & Gas (INTOG) project pipeline. This will create a hub of offshore energy transition infrastructure facilitated by the extension of the Port of Peterhead's Smith Quay and extensive plans for the restructuring of ASCO's South Base.

Peterhead is playing a crucial role in the decarbonisation of Scotland using its unique position to harness the power of the North Sea.

Located in the county of Aberdeenshire, Peterhead has grown from a hamlet of less than 100 to Aberdeenshire's largest town with a population of over 19,000 in the 430 years since it was founded, by harnessing the resources of the North Sea to grow and support its communities.

With an established track record of adapting to change, Peterhead has successfully established Europe's leading whitefish and pelagic port whilst supporting the oil and gas industry. Shaped by this regional heritage, Peterhead is known for its entrepreneurial spirit and diverse economy, cultivating a thriving hub of micro-businesses, and small and medium-sized enterprises that benefit from a strong industrial base, competent supply chain and skilled workforce. These conditions enable Peterhead to deliver a strong pipeline of renewable energy and decarbonisation projects necessary to meet Net Zero ambitions.



Photo: Aberdeenshire Council

In close proximity to St Fergus Gas Terminal and with the potential to develop Scotland’s first carbon capture power station, Peterhead is also expected to play an integral role in the Acorn Project and the Scottish Cluster, one of the UK’s Track-2 Carbon Capture, Usage, and Storage (CCUS) clusters, planned for development at nearby St Fergus. Multiple SSEN Transmission projects are also planned in the Peterhead area, facilitating the transfer of decarbonised energy to demand centres across the UK.



Photo: Aberdeenshire Council

According to an analysis undertaken by BiGGAR Economics, the town’s rich skills base and supply chain capability will enable Peterhead to secure an estimated £1 billion of the construction spend required for this proposed pipeline of projects, generating £626 million Gross Value Added (GVA) and 800 annual jobs created for ten years within the local economy.

Proximity

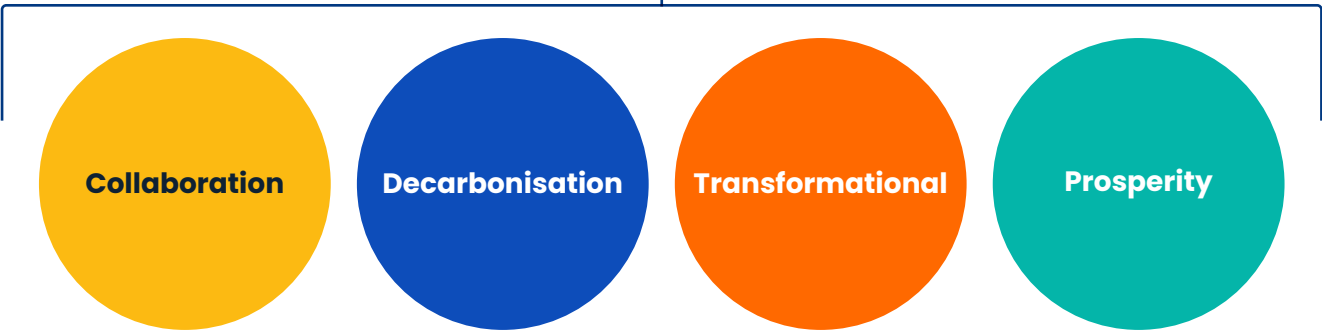


Photo: Peterhead Port Authority

Thereafter, the activity required to operate and maintain these developments, once fully operational, is expected to generate an additional £71 million GVA and support 820 jobs every year in the Peterhead economy.

By harnessing Peterhead’s strategic location and the unique environment of **collaboration** across the supply chain, Peterhead is superbly positioned to lead Scotland’s **decarbonisation** efforts and shape the Net Zero energy transition. Driven by the collective effort of the Forum to facilitate mutually beneficial domestic and inward investment, strategic partnerships, skills development, and ongoing community engagement, this scale of opportunity will have a **transformational** impact on Peterhead and drive **prosperity** for generations to come.



Collaboration

Peterhead's Leading Energy Transition Players

Representing a selection of the key Peterhead energy transition players, these stakeholders, among others, are crucial for the successful delivery of the energy transition within Peterhead and beyond.

Through collaboration driven by the Forum, these stakeholders are positioned to shape the energy transition and remain at the forefront of Scotland's decarbonisation efforts.

Local Supply Chain

Internationally recognised for its supply chain capabilities, Peterhead is a hub of expertise with deep-rooted ties to local, industry-leading organisations, creating opportunities for future projects, businesses, and innovation in the energy transition to take place in the region. The following companies play a crucial role in the Peterhead business community and are fundamental for the delivery of a successful and just energy transition.



Aberdeen & Grampian Chamber of Commerce

Sitting at the heart of the North East of Scotland's business community, Aberdeen & Grampian Chamber of Commerce is Scotland's largest Chamber, and among the most active anywhere in the UK, representing 1,300 member organisations in the region collectively employing over 100,000 people. Around 30% of these are engaged across all aspects of the energy sector.

Aberdeen & Grampian Chamber of Commerce plays a key role in creating an environment which allows the region to thrive and prosper through high-impact events, agenda-setting policy and lobbying work, quality research and bespoke training. Aberdeen & Grampian Chamber of Commerce is committed to supporting the region through its transition from Europe's oil & gas capital to a globally significant renewables and low carbon energy hub.

Through its network, Aberdeen & Grampian Chamber of Commerce is proactive in highlighting Peterhead's potential for growth within the energy industry, helping to connect local businesses and new opportunities with potential investors from across the UK and internationally. Peterhead has played a vital role in supporting Scotland's energy sector in its many facets for decades. With continued focus, attracting inward investment and new opportunities, Aberdeen & Grampian Chamber of Commerce hopes to secure its place within a wider thriving North East of Scotland economy, realising its potential and unlocking new growth and jobs.

As part of this activity, Aberdeen & Grampian Chamber of Commerce publishes an annual Investment Tracker, which most recently reported an estimated £30 billion of capital is expected to flow into the North East of Scotland, with £22 billion of this investment associated with energy projects.



Aberdeenshire Council

Aberdeenshire Council is committed to supporting sustainable development and targeting investment that delivers long-term benefits for communities across the region. Through its Planning and Economy service, the Council plays a key role in enabling and facilitating delivery by creating a supportive planning environment and helping unlock opportunities for growth. The Council's Delivery Team handles a wide range of responsibilities, including delivering development plans, overseeing Local Place Plans, and potentially managing strategic development projects. As your first point of contact, the team can help guide you through

the process and connect you with the right support, resources, and expertise to move your project forward.

Working alongside the Delivery Team, the Economic Development team—also part of the Planning and Economy service—supports both businesses and communities. Their work includes providing practical advice, promoting regeneration efforts, and strengthening economic resilience across Aberdeenshire. They collaborate closely with other services and are actively involved in delivering initiatives such as the Place Based Investment Programme. In addition, they can signpost community groups and businesses to relevant funding opportunities and further sources of support.



ASCO

ASCO is a leading global logistics and materials management services provider, supporting projects in the renewables, new energy, oil & gas and decommissioning sectors. The company supports major energy companies and tier 1 contractors, with operations across five continents and eight countries. Headquartered in Aberdeen, Scotland, ASCO operates from over 60 locations worldwide and employs c.1,500 people.

ASCO's innovative processes and systems mean the company is at the forefront of driving supply chain efficiency, providing full transparency of the entire process from vendors to end users. The fully-integrated suite of support includes logistics, transport and freight, supply base management, aviation services, warehousing and storage solutions, materials management, fuel and bulk provision, marine services, training, lifting and assurance, personnel provision and environmental services. It combines this with specialist technical and advisory services across marine, materials, inventory and lifting operations, and world-class technology via its proprietary integrated Logistics Management System, to meet the needs of energy operators and developers worldwide. Continued execution of innovative low-carbon strategies marks ASCO as the supplier of choice in supporting a sustainable future.

Their wholly-owned, ASCO built, Peterhead supply base opened in 1974 to support the burgeoning offshore market in the North Sea. Now in its fifth decade of operation, it remains a busy private offshore support facility, handling hundreds of thousands of tonnes of deck cargo, fuel, and water each year. Over the years, the base has supported a wide range of projects, from oil and gas drilling campaigns to the installation of offshore wind jacket foundations.

ASCO is committed to continually investing in the base's capacity and capabilities to meet the evolving needs of their customers while continuing to be an intrinsic part of the local community. Employing over 500 people in Peterhead and surrounding areas, they provide training and apprenticeships in multiple disciplines throughout the business. As well as providing skills and job opportunities to generations; they are regularly involved in supporting local charities and community events.

ASCO's South Base is poised for transformation to better support the scale of opportunities emerging throughout the energy transition. Developing the facility will enable it to capitalise on opportunities in sectors like offshore wind, hydrogen, CCS, alternative fuels, and decommissioning, while still maintaining support for its ongoing oil and gas operations.

Photo: ASCO



Dales Engineering Services

Employing 150 people in the Peterhead region and supporting 12 apprenticeships, Dales Engineering Services (Dales) is a specialist engineering company providing fabrication and maintenance services to offshore and onshore energy sectors. Homegrown in Peterhead, Dales has vastly expanded over 35 years and alongside its substantial structural and pipework fabrication capabilities, delivers sea fastening services for the offshore industry throughout the UK and beyond. It also has a well established Hydro Dam maintenance division and specialist machining capabilities. Given Peterhead's strategic location, Dales is ready to support CCS and



Photo: Dales

offshore wind projects as they come online. In particular, Dales' experience includes converting barges for the transport and installation of wind turbines, alongside new opportunities in CCS across the UK utilising its extensive subsea fabrication experience and facilities.



JBS Group

Headquartered in Peterhead, JBS Group is a key contributor to the regional supply chain, delivering engineering solutions to a wide range of industries, including oil & gas, marine and subsea, and renewables, in over 80 countries. With a history of expertise in mechanical and electrical engineering, JBS Group specialises in providing welding and fabrication solutions, and improving Health, Safety, Environment Quality (HSEQ) practices. With over 60% of their current Peterhead workforce starting as apprentices, JBS Group has a strong partnership with Peterhead Academy and grows their team by combining handpicked specialists and homegrown talent to deliver bespoke projects through a deep understanding of the sectors they operate in.

The energy transition has organically shaped the operations of JBS Group as it continues to work closely alongside the renewables industry and diversify its



Photo: JBS Group

to further expand their operations in Peterhead in several key areas to support the wider energy transition, including fabrication, subsea excavation, and exportation.

Alongside 15 other firms within the North East of Scotland, JBS Group also participates in the Scottish Enterprise's Net Zero Academy and is making substantial investments in a range of sustainability measures to ensure a more energy-efficient future in preparation for meeting Net Zero ambitions.



Maritime Developments Ltd

Maritime Developments Limited (MDL) currently employs over 160 people in the Peterhead area, delivering tailored engineering consultancy, design, manufacturing, and deployment of equipment and personnel for the global energy sector. With 25 years of expertise in lifting and

handling large flexible products, MDL has evolved from supporting local fishing trawlers to serving global markets in subsea cables and umbilicals, moorings, pipelay, and decommissioning within the oil and gas industry.

Now at the forefront of offshore renewables, clients are encouraged to mobilise projects from Peterhead Port where MDL provides project management, engineering, and marshalling services, involving typically 30 to 40 local suppliers to prepare vessels for installing subsea power cables and mooring systems for floating offshore platforms, including wind turbines.

Peterhead is ideally located to become a key hub for the storage, handling, and distribution of moorings and cables to support offshore wind farm projects, which is central to MDL's investment and growth plans.



Photo: Maritime Developments Ltd



Peterhead Port Authority (PPA) operates a versatile 24-7, all-purpose, deep-water port on the North East coast of Scotland. Peterhead is Europe's largest fishing port, handling all types of fleet in the catching sector, from pelagic through whitefish to shellfish.

With roots in fisheries stretching back more than 400 years, it is a Trust Port overseen by a Board of Trustees, who as custodians of the future, act in the long-term interests of the Port and the local community.

The Port has an extensive track record of supporting the fisheries, oil and gas, renewables and leisure sectors and PPA is now at the heart of the transition to Net Zero as a partner in the Acorn Project.

The Port's role in the energy transition dates back to the early years of this century when it supported the construction of the Aberdeen Offshore Wind Farm, accommodating floating cranes and barges for the transport of turbine foundations. For several years, PPA has also provided a dedicated berth for crew transfer vessels operating on Hywind Scotland, the world's first floating wind farm, located 18 miles off the coast of Peterhead.

The Port is situated in a geographic sweet spot, being in close proximity to the crescent of proposed offshore wind farm developments which together constitute a significant proportion of the ScotWind and INTOG projects in Scottish waters, that it is hoped will eventually yield up to 30GW of generating capacity.

Peterhead Port could also support the local production of green hydrogen, potentially to be used as fuel for fishing and operations and maintenance (O&M) vessels, and in derivative form for export as alternative fuels.

With the decline of the North Sea, market opportunities in the decommissioning sphere have opened up for Peterhead, especially medium scale work such as pipelines, cables and other subsea plant and equipment.

To capitalise on these opportunities, the PPA Board of Trustees is assessing potential port infrastructure developments and creating an in-depth master plan with a 10-year horizon. Developments being considered could total more than £100m of investment.

A Net Zero strategy is being developed for the Port itself, with baseline carbon emissions being assessed with a view to reducing them. There are already solar panels on the fish market roof and its adjacent new ice factory. Electric vehicles are favoured along with LED lighting, and shore power for fishing vessels is being upgraded.



Photo: Peterhead Port Authority



With over 900 people working in their Peterhead facilities, Score Group (Score) is one of the largest employers in the region. Score supports a wide range of industries by providing engineering services, specialising in valve management and gas turbine solutions. These include, repair and refurbishment activities, machining and fabrication, on-site services, maintenance planning and execution, design engineering, manufacturing, material supply, and materials management. As an organisation, Score is actively working towards four main strategic objectives, including: emissions elimination, energy transition, gas turbines and aerospace, and marine and defence.

As the landscape of the energy industry evolves, Score is looking to leverage its expertise and transition into emerging industries, including offshore wind, hydrogen (engineering, pressure testing, leakage detection), and CCS.

Recognising the importance of vocational training and the industry's need for a pipeline of skilled workers, Score provides engineering apprenticeships to between 30 and 40 young people per year, with over 350 of their apprenticeships working worldwide.



Peterhead is our home and our global headquarters. It is where our roots run deep, and where ideas take shape, and where our community thrives. It's not just where we do business; it's where we belong, where we grow, and where we're committed to making a lasting impact.

– Score

Educational Institutions and Skills Development

Peterhead's rich skills base is central to the region's ability to shape the energy transition, supported though the continued collaboration across Peterhead's educational institutions, training providers, and key industry players. Collaboration of this kind facilitates the development of targeted skills, ensuring that Peterhead is equipped to capitalise on the employment opportunities presented by the energy transition.



North East Scotland College

North East Scotland College (NESCol) is the largest provider of vocational education and training

in the region and employs over 800 people. The Scottish Maritime Academy (SMA) in Peterhead is a NESCol centre of excellence and one of the College's four main campuses. The SMA welcomes 300 students each year, part of a vibrant and diverse college community of 20,000 students studying a wide range of subjects across full-time, part-time and distance learning courses.

NESCol is proud of its role in supporting traditional North East of Scotland industries and plays a crucial part in providing a skilled workforce for new and emerging sectors, ensuring a flow of talent to fill critical skills gaps and to deliver the pipeline of projects in Peterhead.

The College has strong links with secondary schools. For the 2024/25 session, 46% of pupils leaving Peterhead Academy joined a full-time course at NESCol and 41% of school leavers at Mintlaw Academy chose the College for their next step. These figures increase further when apprenticeships and part-time study options are taken into account.

NESCol is leading the skills revolution at the heart of energy transition, working closely with industry partners to ensure the skills required in the regional employment market are reflected in the courses offered and the qualifications students gain. The College is an active member of the Energy Skills Partnership and the

National Energy Skills Accelerator. The College has also partnered with the Engineering Construction Industry Training Board and Energy Transition Zone (ETZ) Ltd as part of the commitment to expanding Net Zero training in the region.

The purpose-built Altens and Fraserburgh campuses have a major role to play in the future of the North East of Scotland. Altens Campus will be home to the new Energy Transition Skills Hub, due to open in summer 2025. Fraserburgh Campus features the Future Skills Zone and Future Skills Workshop, specialists learning zones designed to inspire the future workforce and fuel innovation.

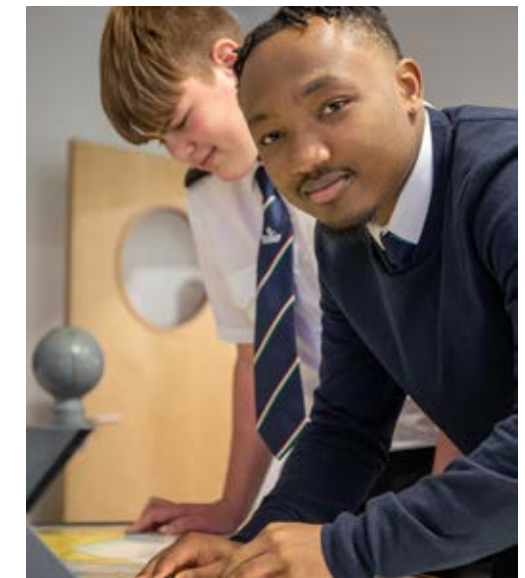


Photo: Scottish Maritime Academy



Peterhead Academy

Supported through collaboration with Forum members, including the PPA, SSE Thermal, JBS Group, NESCol, and Score, Peterhead Academy engages

with industry leaders to provide learning partnerships and training for pupils. Through the Maritime Peterhead Based Learning Experience, there is a collective effort to engage the next generation of workers and equip

them with the necessary skills to pursue opportunities available in Peterhead and the North East of Scotland.

Collaboration between education institutions and industry, such as the partnerships demonstrated by Peterhead Academy, will continue to be an important driver of equipping current and future generations with the skills, expertise, and knowledge, to deliver the pipeline of projects proposed for Peterhead and beyond, to meet Net Zero ambitions for Scotland.



Peterhead Engineers Development Limited

Peterhead Engineers Development Limited (PEDL), in conjunction with Peterhead & District Group Training Limited, has been involved in the training of local engineers since 1967. In 2004 the company relocated to Wellbank Industrial Estate on the outskirts on Peterhead where the new custom-built premises (known simply as The Training Centre) include a large state of the art training workshop, 2 classrooms (with the possibility that these may also be available for hire) and 2 computer suites.

Since 1967, numerous engineering apprentices employed by local companies have been trained by a dedicated team of PEDL fully-qualified and experienced trainers and assessors to gain their qualifications. Many of these apprentices are now employed in senior roles in the engineering industry locally, nationally and internationally.

Although engineering training remains the primary function of the centre, PEDL has added Scottish Vocational Qualifications and National Certificate Business Administration and Warehousing Level 5 programmes to its portfolio.

PEDL takes pride in providing a full modern apprenticeship programme for businesses in their local area and is fully supported by Skills Development Scotland.



Photo: Peterhead Engineers Development Limited

Energy Transition Companies

Peterhead's strategic location, coupled with its rich skills base and supply chain capability, has made the region a hub for leading energy developers. Among others, the following stakeholders are driving a significant pipeline of projects in the Peterhead area.

GREEN VOLT

Green Volt Offshore Wind Project

Leading offshore wind developers Flotation Energy and Vårgrønn are delivering Green Volt, a 560MW floating windfarm off the East Coast of Scotland and set to become Europe's first commercial-scale floating offshore windfarm. Green Volt will deliver electrification of participating North Sea oil and gas platforms – reducing their carbon emissions by 85%, while providing clean, secure power to the UK grid, benefitting UK consumers and industry. Having received both onshore and offshore consent and being awarded a Contract for Difference by the UK Government in 2024, the project remains on track to be completed in 2029.

The proposed development area for Green Volt is 80 km off the coast of Peterhead, and the offshore export cables are set to make landfall close to Peterhead. In March 2024, Green Volt appointed a Peterhead-based Community Liaison Officer to engage with the local community and key stakeholders including local authorities and community groups. The Community Liaison Officer's role is focussed on developing relationships between Green Volt and local communities in Peterhead and wider Aberdeenshire, ensuring that local people have the chance to have a stake in the project. To support this work, Green Volt has already been involved in a number of Peterhead-based projects, including the enhancement of Peterhead Community Trust Victoria Community Park, regular volunteering at Apex Community Café, and contributing to the local Peterhead initiative of 'Boogie in the Bar' held monthly at Peterhead Football Club to combat isolation and loneliness within the local community.



MarramWind

MarramWind is a proposed floating offshore wind farm located off the North East coast of Aberdeenshire. This exciting project, one of the world's largest floating offshore wind farms, is being developed via a joint venture between ScottishPower Renewables and Shell. The wind farm will connect to the grid at a site just west of Peterhead, delivering up to 3GW of renewable electricity, which is enough to power the equivalent of more than 3.5 million homes.

MarramWind welcomes the role of the Peterhead Energy Transition Vision in helping to convey the wider socio-economic opportunities presented by projects such as MarramWind, as well as the actions required to realise these opportunities. Creating the right enabling infrastructure, skills-base and policy environment will be critical to positioning Peterhead to take full advantage of the major energy projects being built in the area. As a developer, MarramWind is committed to playing its part in helping local businesses and communities realise the benefits of offshore wind as part of a wider government-industry efforts to deliver a just energy transition for Peterhead, the North East of Scotland and the country more broadly.



Muir Mhòr Offshore Wind Farm

Fred. Olsen Seawind and Vattenfall were awarded seabed rights by Crown Estate Scotland (CES) in the ScotWind auction in January 2022 for the development of Muir Mhòr, a floating offshore wind farm project, located off the east coast of Scotland.

The project is moving at pace, hitting all key development milestones to start generating energy in the early 2030s and contributing to the UK Government's target of building 5GW of floating wind capacity.

Muir Mhòr is the first fully floating offshore wind farm from the ScotWind projects to reach the point of submitting both offshore and onshore consent applications for determination, following a 12-month period of consultation in Peterhead and Longside with local communities and stakeholders most impacted by the development.

The project team are committed to a transparent and inclusive approach to growing their supply chain. In alignment with their procurement strategy, every opportunity to source local suppliers directly and indirectly is being taken.

Peterhead Developers Forum

As part of a collective effort to expedite the delivery of the energy transition and ensure Peterhead continues to pave the way for Scotland, the Peterhead Developers Forum creates a platform for collaboration between offshore wind developers and asset owners, such as the joint venture partners behind Green Volt, MarramWind, Muir Mhòr, and Salamander offshore wind farms.

Providing an opportunity for developers to engage with key stakeholders such as CES, the Marine Directorate, Aberdeenshire Council, and National Grid Electricity System Operator to enable dialogue on key issues and create a shared understanding, contributes to the delivery of energy transition infrastructure in a cost-efficient way, whilst reducing disruption to the local community of Peterhead.



Photo: JBS

Collaboration of this kind enables key stakeholders in Peterhead to pull from a wider pool of knowledge, skills, and expertise, allowing the region to realise its vision as Scotland's leading energy hub and for the community to share in the benefits of this transformation.



Salamander Offshore Wind Farm

Powered by Ørsted and Simply Blue Group, the proposed Salamander project encompasses a 100MW floating wind farm and 100MW onshore battery element. Located off the coast of Peterhead, the scale of capital investment required for Salamander creates a considerable opportunity for the North East of Scotland, maximised by Salamander's commitment to deliver community benefits and engage with the local supply chain.

With construction work expected to begin in 2026, Salamander has several processes and policies in place to encourage local employment and to use local labour as far as possible, with signed agreements in place with almost 60 local suppliers and ports.

Committed to community engagement and building the workforce of the future, Salamander works in partnership with Peterhead Academy, to lend their knowledge and time to support students in Science, Technology, Engineering and Maths (STEM) learning. The Salamander team is also actively pursuing additional opportunities for educational outreach and keen to hear from local initiatives.



SSEN Transmission

SSEN Transmission is responsible for the electricity transmission network in

the north of Scotland, maintaining and investing in the high voltage 132kV, 220kV, 275kV and 400kV electricity transmission network. The business is working with an aim of unlocking the renewable energy potential across the North of Scotland, including in Peterhead and the North East of Scotland, and taking clean power to where it will be used across Scotland and the rest of Great Britain.

SSEN Transmission's 'Pathway to 2030' investment programme, with plans to invest £20 billion in the North

of Scotland's transmission network, is one of the biggest investments that the region has seen for decades and is set to support 20,000 jobs across the UK supply chain, around 9,000 of which will be north of the border.

Amongst several other projects, the company's investment programme includes the proposed establishment of the Netherton Hub, near Longside, to the west of Peterhead; a development that will generate significant opportunities for local people and local businesses. Another key part of the programme of works is the delivery of the Eastern Green Link 2 (EGL2) subsea cable from Peterhead to Yorkshire that will transport enough clean energy to power around two millions homes.



SSE Thermal

SSE Thermal is part of the wider SSE Group. SSE is the UK's clean energy

champion and has a clear aim to provide the energy needed today while building a better world of energy for tomorrow. Alongside a renewables led future, flexible thermal generation will be crucial to ensuring that the lights stay on when the wind doesn't blow and the sun doesn't shine as we transition to a Net Zero future.

Commissioned in 1982, Peterhead Power Station provides that important flexibility to the grid. Being the only large combined-cycle gas turbin power station in Scotland, it plays a critical role in the energy system. The site currently employs 80 full-time staff, including 13

apprentices and 3 graduates and SSE Thermal is widely recognised as a local employer and key stakeholder within the business community.

As we transition towards a Net Zero world, SSE Thermal is actively exploring emerging carbon capture technologies to provide flexible and reliable energy while lowering carbon emissions. SSE Thermal and Equinor are exploring options for decarbonisation power generation at Peterhead, developing plans for a new power station at the site equipped with carbon capture technology. Low-carbon technologies such as carbon capture will be key to underpinning wider industrial decarbonisation, in turn creating real opportunities for workers and communities in Peterhead and the North East of Scotland.



Photo: SSE Thermal

STOREGGA Storegga

Storegga, with a workforce of approximately 50 in Aberdeenshire, is an independent British SME developing low-carbon solutions to accelerate industrial decarbonisation in the UK and internationally. Backed by a strong consortium of global investors—GIC, XRG, Macquarie, Mitsui, M&G, and Snam—Storegga is leading the development of the Acorn Project, a joint venture with Shell UK, Harbour Energy and North Sea Midstream Partners. Storegga is also

delivery partner on Cromarty Hydrogen, one of the first hydrogen projects to contract with the UK Government. Its expanding portfolio also includes CO₂ storage developments in the USA, Norway, and Malaysia.

With deep expertise across subsurface, engineering, commercial, and project management disciplines, Storegga delivers practical decarbonisation solutions for hard-to-abate sectors such as manufacturing, distilling, power generation, chemicals, and cement.



px Group

Managed by px Group, St Fergus Gas Terminal has been in operation since 2016, processing natural gas from several UK and Norwegian offshore fields and feeding into the National Transmission System. St Fergus Terminal is a key component of the existing infrastructure in Peterhead and plays a central role in the Acorn Project and Scottish Cluster infrastructure. In particular, the CO₂ captured by the proposed Acorn Project is expected to be delivered to St Fergus Gas Terminal, before being transported for permanent storage in the North Sea.



Photo: St Fergus



Photo: Score

Over many years as Europe's leading whitefish and pelagic port and as a hub for servicing oil and gas, Peterhead has developed a strong skills base for offshore developments and relationships with skills providers.



Photo: Dales

Peterhead's Education, Skills & Enterprise Offering

As a result of Peterhead's rich heritage, the town has sophisticated port operations, a strong supply chain and a high-quality workforce, making Peterhead well-placed to deliver the pipeline of projects proposed for the North East of Scotland.

“”

Peterhead has a workforce that can deliver with well-established skills in maritime, energy and manufacturing.

– ETZ Ltd

Skills Base

The Peterhead area has a wealth of skills across a number of domains that are relevant to the opportunities presented by the energy transition, including, but not limited to, engineering, project management and offshore operations.

Its maritime legacy and oil and gas experience, including in subsea engineering, logistics and vessel handling, and decommissioning, means that Peterhead is well-placed to meet the needs of the offshore wind sector. In particular, the Port of Peterhead can facilitate the O&M activities of planned offshore wind farms.

These skills, as well as related specialisms in reservoir and pipeline management, related to the existing network of pipelines and the infrastructure associated with the St Fergus Terminal, mean that the area has strong capabilities for the CCS sector. In time, these could also be deployed in hydrogen production, storage and transport.

Peterhead is also home to a diverse range of construction and engineering companies, with a growing presence and skills base in project management, civil engineering and fabrication. The wider region also benefits from a well-established supply chain, with leading local companies such as ASCO, Dales, JBS Group, and Score, playing a vital role in supporting energy generation in the region.



Photo: Maritime Developments Ltd

“”

One of the key attributes of the Peterhead area is the "diversity and global footprint of the companies within Peterhead. The network within the area is phenomenal.

– JBS Group

An Engaged Local Area

Peterhead’s workforce, which has long roots in fishing and farming, is respected for its prestigious work ethic, practical approach to problem-solving, and tight-knit community. This creates ideal conditions for expansion across a range of different sectors.

Peterhead Academy has strong relationships with local businesses and takes a proactive approach to engaging students early and supporting school leavers into apprenticeships and other local career opportunities.



From the local Academy with an extremely engaged and passionate Headmaster, to the local college campus which is home to a large proportion of the region’s apprentices, Peterhead has great educational facilities to be proud of.

– SSE Thermal

Employers in the area also have strong links to NESCoI, which provides courses in renewable energy technologies, engineering, construction and other fields at its Aberdeen and Fraserburgh-based campuses. In addition, its Peterhead-based Scottish Maritime Academy offers specialised offshore, subsea and maritime training. These collaborative activities support research and innovation, supplying talent to companies active in the energy industry and developing the necessary skills to support the transition to Net Zero.



Photo: Scottish Maritime Academy

Apprenticeship schemes, such as the one led by Score, have long been a vital source of skilled workers in Peterhead and will continue to be essential in preparing the local workforce to support the growing pipeline of projects in the area. With a significant proportion of school leavers in Peterhead entering apprenticeship positions, a large share of the local workforce is comprised of members of the local community who have been born, raised, and educated, within the region. This strong local foundation has fostered a network of knowledge and expertise, creating a community and supply chain built on trust, collaboration, and a proven culture of delivering results.

Building on its existing skills base and educational assets, coupled with the collaborative effort of partners such as PPA and ETZ Ltd, Peterhead’s workforce and supply chain are well-positioned to benefit from the range of projects planned in the area.

Future Skills Demand

Growth and innovation in current and future industries will require new skills. An analysis undertaken by Opergy of raw data used to create and update the Energy Skills Intelligence Hub (contracted by OPITO) on sectors in the North East of Scotland including offshore wind and CCS, highlights what these skills are likely to be.

Compared to the current baseline (including oil and gas), by 2035, new sectors will increase demand in areas such as subsea, marine and ports capabilities, as well as logistics, asset operations (e.g. O&M) and HSEQ. These are areas where Peterhead has existing strengths that it can continue to build and capitalise on.

The pipeline of projects in Peterhead will create employment reaching far beyond energy-specific expertise. The wider energy transition will demand a wide variety of skills, including project management, human resources, marketing, administration, finance, and many other roles that are essential for the delivery of infrastructure and large-scale developments. The diverse range of opportunities associated with the energy transition will, as a result, foster employment for



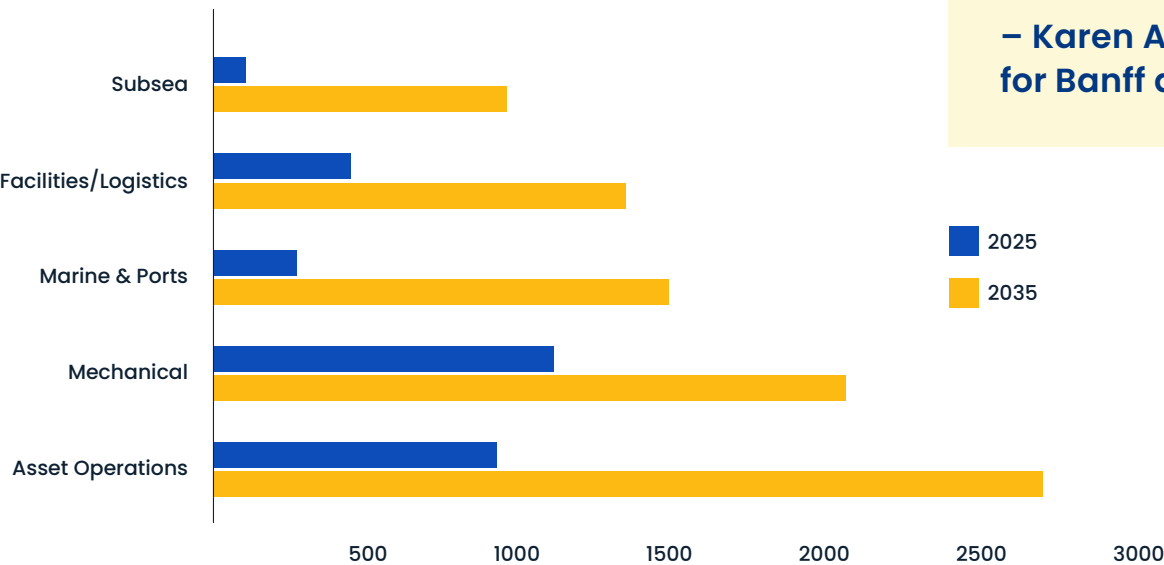
Photo: ASCO

individuals across the entire community, allowing those with a variety of backgrounds and skillsets to benefit, enabling the whole of Peterhead to prosper.

The Opergy analysis conducted projects that the demand for skills in emerging sectors in Aberdeenshire and Highland, will rise significantly between 2025 and 2035, particularly for subsea skills, facilities/logistics, asset operations and ports.

Increase in skills demand in new sectors (2025 – 2035)

These projections demonstrate the growing demand for energy transition skills, many of which already exist within Peterhead’s workforce. Continued collaboration between Peterhead’s educational institutions, training providers, and key industry players will facilitate the development of these targeted skills, ensuring that Peterhead can capitalise on the employment opportunities presented.



Traditional oil and gas companies have much to offer the energy transition market, they have the people and the skillset already in place.

– Karen Adam, MSP for Banff and Buchan

Decarbonisation

Peterhead's Project Pipeline

Strategically located, Peterhead is home to a strong pipeline of projects, providing a unique opportunity to leverage Peterhead's skills base, supply chain capability, and existing infrastructure, to shape the energy transition.



Acorn and the Scottish Cluster

The Scottish Cluster brings together Acorn, National Gas's SCO2T Connect Project (a pipeline reuse project which links the Central Belt with the North East of Scotland) and a group of industrial carbon capture, power, hydrogen, bioenergy and waste-to-energy businesses across Scotland that are committed to timely and cost-effective decarbonisation, supporting UK ambitions for clean energy, green prosperity and economic growth.

Acorn is Scotland's only advanced CO2 transport and storage network. By reusing energy infrastructure, it will transport CO2 emissions captured from high energy-intensity sources across Scotland's industrial hubs and safely and permanently lock them in rock formations deep below the North Sea. The existing pipelines and its proximity to St Fergus, make the Port of Peterhead a key location for handling and transferring imports of CO2, presenting the Port with the opportunity to develop a dedicated reception terminal to enable CO2 shipments to be transferred to the Acorn storage system. Acorn



Photo: St Fergus

Photo: St Fergus



will make use of one of the UK's most mature and best-understood geological CO2 storage sites, 100km off the North East coast of Aberdeenshire.

Acorn and the Scottish Cluster can make a significant contribution towards the UK's carbon reduction targets, by capturing CO2 emissions from hard to abate industries. With 75% of the UK's carbon storage located in the North Sea, projects of this nature present a unique opportunity for Peterhead to shape the energy transition. With the support of Government, projects of this kind ensure that Peterhead can leverage its location and generate significant economic activity and jobs for the local economy.

SSE Thermal Carbon Capture Power Station

SSE Thermal and Equinor are developing plans to build a new power station with carbon capture technology at Peterhead that would have a generating capacity of up to 910MW. The power station is being designed to have a minimum capture rate of 90% and expected to capture and safely store approximately 1.5 million tonnes of CO2 each year, which is equal to 5% of the UK’s 2030 target.

Situated at SSE Thermal’s existing Peterhead site it is ideally placed with access to essential CO2 transport and storage infrastructure being developed through the Scottish Cluster, supporting Scotland to meet Net Zero ambitions and decarbonise the economy.

In addition to its contribution to securing a Net Zero future, Peterhead Carbon Capture could see in the region of 1,000 jobs being created during construction,



Photo: SSE Thermal

with around 240 jobs supported during each year of operations, delivering real value both locally and regionally.

Close engagement with the local business and community are a priority, ensuring the project supports a Just Transition for the highly skilled workforce within the North East of Scotland.

As Scotland moves towards a Net Zero future, the development of CCS projects will play a crucial role in ensuring supply security within a decarbonised grid.

Offshore Wind Projects

Managed by Crown Estate Scotland (CES), the ScotWind leasing round enabled developers to apply for seabed rights to propose and construct offshore wind farms in Scottish Waters. A total of 19 offshore wind projects were successful within this leasing round, expected to deliver a total capacity of over 30GW.

CES’s further Innovation and Targeted Oil & Gas (INTOG) leasing round was designed to enable developers to apply for seabed rights to develop small-scale innovation projects that will electrify oil and gas infrastructure in the North Sea. With 98% of the 5.4GW INTOG pipeline planned for the North East of Scotland, Peterhead’s experienced and capable supply chain is well-placed to support the delivery of such projects.

Given the Port of Peterhead’s capabilities, it makes an ideal choice for developers to base their O&M activities, as well as being a strategic location for individual grid connections for offshore wind farms in the North Sea. It is expected that six offshore wind farms will be connected to the national grid via Peterhead, including Broadshore (including Sinclair and Scaraben), Buchan, Cenos, Green Volt, MarramWind, and Muir Mhòr.



Peterhead is well placed to secure long term benefits from the pipeline of offshore renewable projects. To maximise the potential benefits investment is required in infrastructure to derisk and support acceleration of supply chain investment.

– Karen Adam, MSP for Banff & Buchan



SSEN Transmission’s Pathway to 2030

SSEN Transmission is investing over £20 billion, under their Pathway to 2030 programme, to deliver multiple projects designed to build new, and upgrade existing, overhead lines, substations, and subsea links, to help deliver Scotland and the UK’s energy security and clean power targets.

To transfer the renewable power generated in the North East of Scotland, and the surrounding seas, to where it will be used across Great Britain, several projects within the Peterhead area are in development.



Photo: SSEN Transmission



Photo: SSEN Transmission

In particular, the £4.3bn EGL2, a joint venture with National Grid Electricity Transmission, is a 2GW high voltage direct current (HVDC) cable link to be built between Peterhead and Drax in Yorkshire, alongside a subsea cable from Peterhead to Lincolnshire, called Eastern Green Link 3 (EGL3).

Several other projects are planned for the Peterhead area, including a 2GW subsea HVDC link from Spittal in Caithness to Peterhead, a new 400kV overhead line between Beaulieu and Peterhead to connect several new substations, the establishment of the Netherton Hub, and a new HVDC Switching Station at Peterhead.

Port of Peterhead Expansion

PPA and ASCO, supported by Scottish Enterprise, are jointly working on a Peterhead Port Masterplan to fully capitalise on the opportunities presented to Peterhead across multiple sectors. Leveraging both organisations’ proven expertise and capability, PPA and ASCO are working closely to optimise port infrastructure to present a combined Peterhead Port energy transition offering, actively targeting offshore wind opportunities, clean fuels and CCS for Peterhead.

The Masterplan, encompassing all project ideas, will chart the course for the Port’s future development to achieve a clearly defined vision for the Port. With the aim of maximising the opportunities of the Port and ensuring the future sustainability of both the Port and ASCO, all development projects, undertaken individually or jointly, will be carried out with this vision in mind.

Whilst oil and gas remains a key part of their operations, ASCO is actively working to transform Peterhead South Base into a flexible hub for the wider energy sector to support a wide range of cross-sector projects, including

wind, decommissioning, alternative fuels, CCS, and traditional oil and gas, simultaneously.

Specifically, for PPA, Project 1 of the Masterplan is an extension to the Smith Quay. Currently the Smith Quay is 120m long and 40m wide, with a 40m berthing dolphin, accommodating vessels up to 160m and providing a minimum water depth of 10m. Equipped with a heavy lift pad, the berth is designed to accommodate crane lifts of up to 500 tonnes and skidding operations of up to 2,500 tonnes. The remainder of the quay was designed to handle a broad range of trades, including renewables and subsea vessels, support crane lifts of up to 300 tonnes and offering an adjacent working area of 11,000m2. This infrastructure makes an ideal site for quayside fabrication and larger-scale mobilisation projects. Project 1 will extend the Smith Quay by 80m with a further 25m to a berthing dolphin, allowing the quay to accommodate vessels upwards of 180m in length and creating an additional 5,000m2 of working space the extension will be strengthened to handle heavier loads along its full length. Subject to the final investment decision in 2025, the extension is expected to be complete by late 2027/early 2028.

Energy Transition Projects Key

- Scotwind - Fixed
- Scotwind - Floating
- Existing Windfarm
- INTOG
- CO₂ Storage Sites
- ETZ

Proposed Future Energy Transition Projects



North East Scotland
Energy Transition Projects

Transformation

Scale of the Opportunity

According to an analysis undertaken by BiGGAR Economics, to deliver the pipeline of projects proposed in Peterhead it is estimated that upwards of **£1 billion of construction spending** would be secured in Peterhead itself, expected to generate **£626 million Gross Value Added (GVA)** and **800 annual jobs** created for ten years within Peterhead.

BiGGAR Economics estimates that the activity required to operate and maintain these developments, once they are fully operational, is expected to generate an additional **£71 million GVA** and support **820 jobs every year** in the Peterhead economy. Economic activity of this nature requires permanent workers to live close to the developments, providing investment opportunities for accommodation and local amenities, further stimulating spending within Peterhead and its surrounding areas across a variety of sectors.





Photo: Peterhead Port Authority

Peterhead is playing a crucial role in the decarbonisation of Scotland and uses its unique position to harness the power of the North Sea.



**£22 billion
energy
investment**

**projected in the North East over
the next decade**

**75% of the UK's
carbon storage**

is located in the North Sea



Shaped by its **regional heritage**, Peterhead is known for its **entrepreneurial spirit** and **diverse economy**, cultivating a thriving hub of micro-businesses, and small and medium-sized enterprises that benefit from a **strong industrial base, competent supply chain** and **skilled workforce**.

“”

There is a natural ease in working with the people of Peterhead. The community is built on a strong, hardworking, and honest culture, excelling in challenging situations as true problem solvers. Collaboration is second nature—working together for the greater good is deeply ingrained. Knowledge and skills are passed down through generations, preserving a rich history that MDL and the people take immense pride in.

– Maritime Developments Ltd

Peterhead's Project Pipeline

SSE Thermal and Equinor are developing a new power station with carbon capture technology at Peterhead, crucial for ensuring supply security within a decarbonised grid.

Peterhead is at the heart of the Acorn Project, one of the UK's Track-2 CCS clusters, planned for nearby St Fergus.

The Port of Peterhead is situated in a geographic sweet spot, being in close proximity to the crescent of proposed offshore wind farm developments which together constitute a significant proportion of the ScotWind and INTOG projects in Scottish waters.

SSEN Transmission are delivering multiple projects under its Pathway to 2030 programme, designed to develop and upgrade overhead lines, substations, and subsea links. To transfer the renewable power generated in the North East of Scotland to demand centres across the UK, several projects within the Peterhead area are in development.

The Forum continually looks for ways to work collaboratively, enabling Peterhead to capitalise on the opportunities of the energy transition to deliver growth and promote new investment opportunities.



**16.6 million
tonnes CO2**

**saved annually through
proposed project pipeline**

Peterhead is uniquely positioned to deliver a strong pipeline of renewable energy and decarbonisation projects necessary to meet Net Zero ambitions.

Local Economic and Community Development

“”

The Forum is committed to advancing and maximising local economic and community development in the Peterhead area and is keen to explore further opportunities for collaboration with all energy transition stakeholders.

– The Forum

Forum companies are committed to contributing to local economic and community development to ensure that the whole community benefits from a just transition as Peterhead contributes to Scotland’s decarbonisation efforts, enabling growth and prosperity for current and future generations.

Community benefit, driven by the energy transition, is bringing substantial investment into Peterhead. This influx of resources presents a significant opportunity for the town, enabling local projects in order to drive positive change and foster sustainable development. Through collaboration with developers, businesses, and voluntary groups, Peterhead can harness vital resources to support social initiatives that make a lasting impact.

Ongoing projects already demonstrate how community benefit can be a catalyst for progress, fostering economic resilience and social well-being. The examples below illustrate just some of the initiatives already underway, with other initiatives in the planning process or under consideration.

Community Benefit Initiatives

Peterhead Port Authority

Operating as a Trust Port, PPA has a responsibility to the local community to drive jobs and economic prosperity, with the overarching purpose to manage, maintain, and further develop the Port to be passed from one generation to the next. Naturally, this makes the Port a key focal point of collaboration across Peterhead and within the Forum.

The energy transition provides new opportunities for PPA to invest and innovate, to add value to port operations, the town, and the community. As PPA continues to adapt to the evolving energy landscape, the Port is well positioned to maximise the benefits offered by the energy transition, with a particular readiness around offshore wind and CCS projects, helping to shape the energy transition within Peterhead and beyond.

Photo: Peterhead Port Authority



Playing an integral role in the business community, as well as local community, if the Port prospers, then generally so does the supply chain and local workforce, driving growth for generations to come. PPA’s charitable and sponsorship work equates to around £60,000 per year supporting local initiatives that in turn benefit the local community.

Score Group

For over 30 years Score has been committed to engineering apprenticeship excellence, ensuring a seamless blend of academic and hands-on training for industry-relevant skills. By partnering with local schools and colleges, Score promotes regional integration and career development that offers apprentices hands-on experience in community projects. This strengthens regional ties and creates meaningful career pathways for local talent.

The apprenticeship program plays a vital role in preparing the town to lead the energy transition. For Score, this initiative is a strategic investment—designed to build a loyal, highly skilled workforce that directly supports its long-term competitiveness, operational efficiency, and growth in the energy sector. This expanding talent pool not only supports Score’s ongoing operations but also draws new businesses and investment to the area, helping to create a vibrant economic hub and drive sustainable growth.

By providing opportunities for young people within Peterhead, the apprenticeship programme also

Photo: Score



has a transformational impact on the community. Offering an accessible pathway for young adults to gain skills, qualifications, and experience in the local area, the apprenticeship programme contributes to social mobility and to a more stable and prosperous community, enabling the whole of Peterhead to benefit from a just transition.

SSE Thermal’s Community Investment Programme

SSE Thermal is committed to its role as a good neighbour and is working across the region to invest in communities through engagement and volunteering as part of its Community Investment Programme. As part of this, SSE Thermal engages with students through schools and colleges to inform and educate young people on how Peterhead will play its part in the transition to Net Zero and increase awareness of careers within the energy industry. This engagement will aim to inspire local people and meet the demand for skilled workers, whilst ensuring the local workforce is equipped to secure employment opportunities presented by the energy transition.

To support the local supply chain, SSE Thermal also leads ‘Meet the Buyer’ events prior to a project’s construction period, which provide an opportunity for suppliers to learn about the services that SSE Thermal is looking to procure. This provides an opportunity for local suppliers to invest to prepare, enabling them to compete against bigger businesses, and secure construction spend locally. By supporting the local supply chain SSE Thermal is equipping local businesses to have a significant stake in the energy transition and generate long-lasting and meaningful benefits within Peterhead.

As part of the Community Investment Programme, SSE Thermal has also introduced a community investment fund of £25,000 per year for community projects in the Peterhead area that are working to deliver benefits for the community in and around the power station. Funding of this nature will contribute to the wider development of Peterhead, supporting the towns transformation alongside the energy transition.

“”

There is a lot of investment to be made in Peterhead and it is imperative that we ensure that the benefits and opportunities to the area and community are a real focus.

– SSE Thermal



Aberdeen Foyer

Aberdeen Foyer has been awarded £2,000 from the SSE Thermal Community Investment Fund to assist with renovations and upgrades to their kitchen and café at their Peterhead site.

Aberdeen Foyer is a charitable organisation supporting over 2,300 people a year in North East Scotland towards independent living, learning and work. They work alongside people to overcome challenges, discover their strengths, and build positive futures. Their services include supported housing, employability programmes, health and wellbeing support, education, and financial inclusion services. Aberdeen Foyer are very proud to be part of the Peterhead community offering person-centred support that responds to local needs. They are committed to providing opportunities for individuals to realise their potential and live a good life.



Investment into Peterhead is vital for ensuring the community continues to grow and thrive. It not only brings opportunities for local employment but also contributes to the area's long-term resilience and sustainability. Beyond the economic benefits, initiatives that engage with the community and provide accessible opportunities are essential. Further investment can foster a sense of pride, create pathways to training and skills development, and ensure that individuals and families feel supported. By working together, we can build a future where everyone in Peterhead has the opportunity to flourish.

– Aberdeen Foyer

SSEN Transmission

Recent UK Government Guidance sets out expectations for Community Benefit funding associated with new electricity transmission infrastructure. In the North of Scotland, this is expected to be worth more than £100m over the coming years. Prior to guidance being published, SSEN Transmission committed an initial fund of £10m which includes £2m for local communities in and around Peterhead. This fund is associated with the EGL2 project and other future projects will bring further funding to the area. Community representatives created a funding scheme and identified local priorities. These priority themes include employment and skills, enhancing the natural environment, and transport and connectivity. The fund also incorporates a microgrant scheme which will be delivered in partnership with the five community councils in and around Peterhead.

Offshore Wind

Given Peterhead's capacity for offshore wind development, there is also a significant opportunity for the local community to be the recipient of a number of community benefit funds, which will provide a source of funding for projects that benefit the community.

As partners for the Salamander Offshore Wind Farm, Ørsted and Simply Blue will ensure that the project maximises the benefits flowing into local communities.

Similarly, Buchan Offshore Wind Farm has committed to a funding package of £50,000 to support and

enhance STEM learning and activities within local schools, helping to equip the future workforce with the necessary skills to deliver the pipeline of projects, whilst ensuring the communities of Peterhead are taken along on the journey to decarbonisation.

Community benefit initiatives such as these empower local residents to develop and implement projects that reflect the community's shared needs and aspirations, helping to ensure that the community of Peterhead can capitalise on the opportunities of the energy transition and share in the benefits of a just transition.

Catalytic Investment for Transformation

With the Aberdeen & Grampian Chamber of Commerce 2025 Investment Tracker projecting over £30 billion worth of investment to flow into the North East of Scotland over the coming decade, and approximately three-quarters of it expected to be energy-related, the Forum, alongside partners, is continually looking for ways to enable Peterhead to capitalise on the energy transition to deliver growth and promote new investment opportunities.

Investment Opportunities

INVEST ABERDEEN

As a renowned global energy hub, the North East of Scotland has a strong track record as one of the most investible, productive and entrepreneurial local economies in the UK and is actively attracting investment at scale.

As a hub for a highly-skilled talent pool and well-connected business environment, Peterhead is leveraging its strategic location and its unique assets and infrastructure to deliver a Net Zero vision and shape the energy transition.

Invest Aberdeen, alongside Scotland's enterprise agencies, is available to support businesses through exploring investment opportunities, providing guidance and helping to make connections to facilitate investment.

North East Scotland Investment Zone

In June 2023, the North East of Scotland, including Peterhead, was awarded UK Government Investment Zone status, securing up to £160 million over the next decade to drive economic growth, support businesses, and create high-quality jobs. Proposed as one of two designated tax sites, Peterhead is set to become a hub for green energy innovation, attracting investment and strengthening private sector growth in high-potential industries. To support this transformation, 200 hectares of land in Peterhead will be allocated as tax sites, providing businesses with incentives to expand and innovate.



An Investment Zone in the North East of Scotland will help pave the way for us to seek out exciting new opportunities for our vital energy sector, which we would not otherwise have benefited from.

There is absolutely no doubt that Peterhead has tremendous scope for further growth and the incentives brought by the Investment Zone will help further raise the aspirations of the region, create more jobs and increase the prosperity of Peterhead and the wider region alike.

– Aberdeenshire Council

Building on Peterhead's thriving hub of micro-businesses and small and medium-sized enterprises, the North East Investment Zone will attract further investment and new businesses to the area, increasing expenditure in the local supply chain and generating high-quality employment opportunities. This will support wider economic growth within the Peterhead economy and support transformation in the local area.



ETZ Ltd aims to accelerate North East Scotland’s energy transition to ensure the region remains a global leader in energy excellence. Through dedicated supply chain support programmes and targeted investment in skills, innovation and infrastructure, ETZ Ltd is seeking to attract new investment to the region and to support our existing world class supply chain transition and grow.

– ETZ Ltd



ETZ Ltd is a private sector-led and not-for-profit regional economic development organisation, supported by significant funding from Opportunity North East and both the Scottish and UK Governments. Its purpose is to accelerate the North East of Scotland’s energy transition to create lasting jobs and prosperity for the region, Scotland and the UK.

The North East of Scotland has the highest concentration of energy supply chain companies anywhere in the UK, including world-renowned subsea engineering. This ecosystem provides a critical mass of skills and experience that is crucial to accelerating new offshore energy projects. ETZ Ltd supports this ecosystem to help accelerate their energy transition ambitions.

ETZ Ltd provides wide ranging support to the region’s energy supply chain. The supply chain pathway programmes highlight international trade opportunities, support development of business strategies, supports digital adoption, and delivers masterclasses to increase market knowledge to the region’s incumbent supply chain, interacting with over 300 companies per annum. ETZ Ltd also provides capital grant funding and has

issued over £7M of support funding to companies based in the North East of Scotland and leveraged an additional £12 million of private sector funding.

ETZ Ltd’s vision is for the North East of Scotland to remain a global leader in energy excellence, with a world class supply chain, pioneering low carbon projects, and a thriving economy. ETZ Ltd is committed to supporting the creation of quality jobs and accessible training and employment opportunities. ETZ Ltd is developing the Energy Transition Skills Hub (ETSH) founded by ETZ Ltd, Shell UK and North East Scotland College, with support from UK Government and Scottish Government’s Just Transition Fund for the North East of Scotland and Moray. This will provide teaching spaces, a demonstration and teaching facility, and a welding and fabrication academy, to support the development of key skills for the energy transition. An energy outreach vehicle has also been built to spark the curiosity of the next generation, and travels around the North East of Scotland’s schools to inspire the next generation of energy pioneers.

ETZ Ltd works in partnership with industry, government, and academic institutions to ensure the North East of Scotland becomes one of the most attractive locations in Europe for investment in low carbon energy technologies.

Photos: ETZ



Photo: Maritime Developments Ltd

Through the collective effort of the Forum to focus strategic investment on key opportunity areas, Peterhead will ensure its community and workforce are at the forefront of shaping the energy future, driving long-term prosperity, and fostering inclusion for all.



Photo: Peterhead Port Authority

Key Opportunity Areas

As Peterhead’s business and local community rise to the challenge presented, there are significant areas of opportunity to capitalise on the projected growth.

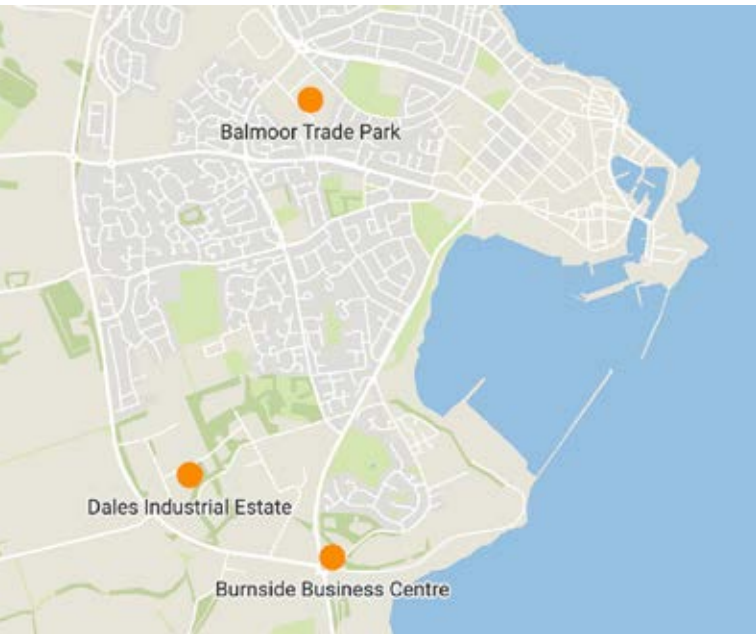
Development and Expansion Opportunity

Peterhead has a wealth of development sites to allow for continued growth of the town and wider area. Whether it’s through local business expansion or inward investment, at the time of writing, there are a variety of brownfield and greenfield sites available in Peterhead ready to service the needs of prospective investors and investments.

Balmoor Trade Park offers modern, self-contained industrial units west of Peterhead town and is ideally located close to access routes in and out of Peterhead and to the Port which will be beneficial for businesses seeking strategic coastal access or who have existing operations port side. Currently boasting the availability of 10 rental units for industrial accommodation ready to support a range of business activities.

There are three sites available on Dales Industrial Estate to the southwest of the centre, keenly located near the A90. These are also three greenfield sites with pre-established road infrastructure ready to be developed.

Finally, the Burnside Business Centre contains 24 offices ranging from 146 to 300 square feet, working utilities, and is proximate to food outlets, a service station and a hotel within walking distance of the Business Centre. Located at Invernettie roundabout on the main approach into Peterhead from Aberdeen, Burnside Business Centre provides a clear access route for those utilising Aberdeen’s airport or train station to access Peterhead.



Created with Datawrapper

Local Development Sites Map

As with all development, as Peterhead grows and develops its site availability will evolve. Invest Aberdeen is the best institution to contact for the most up to date information on site and premises availability and potential.

For more details contact Invest Aberdeen or visit:
investaberdeen.co.uk or
aberdeenshire.gov.uk/business/available-property



Photo: Aberdeenshire Council

Connectivity

Located 27 miles North East of Aberdeen, Peterhead has good connections by road, rail and air. Over recent years, connectivity across the region has significantly improved due to Transport Scotland’s commitment to upgrading travel infrastructure in the North East of Scotland.

Road

The introduction of the Aberdeen Western Peripheral Route (or Aberdeen bypass) and the dualling of the A90 between Aberdeen and Ellon, has significantly increased connectivity for businesses within the North East of Scotland and contributes to faster and smoother journeys to and from Peterhead.

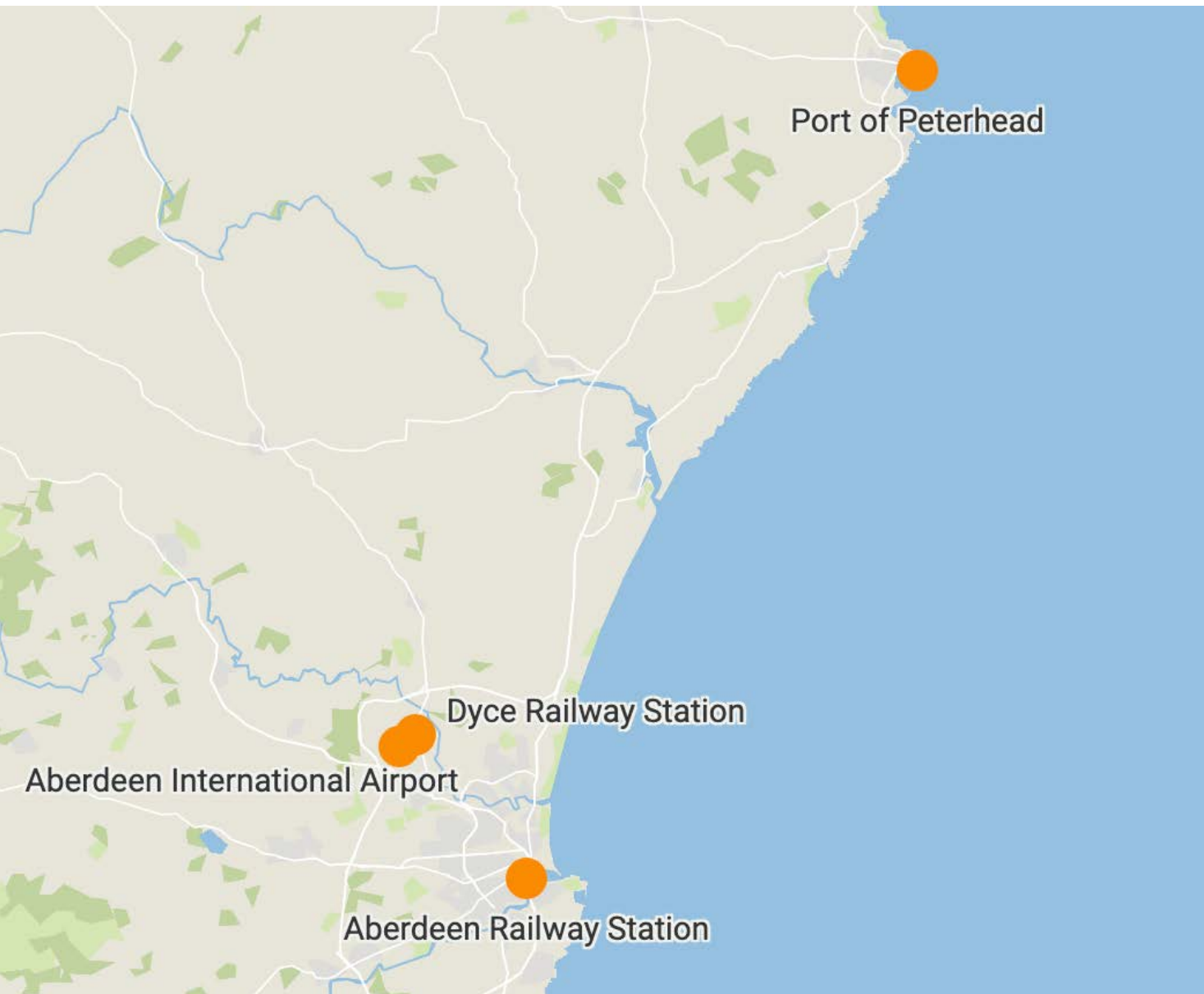
Air

Located in Dyce and easily accessed by road from the Port of Peterhead, Aberdeen International Airport provides air links with London airports, regional UK airports and key European hubs. The airport also serves as a major centre for helicopters involved in oil industry support work, including transporting personnel to and from platforms in the North Sea.

Rail

Peterhead benefits from onward rail connections with access to regular local services between Dyce and Aberdeen, and links from Aberdeen Railway Station to all major UK cities.

Connectivity Map



Created with Datawrapper

Enhancing Connectivity

To further enable Peterhead’s connectivity and to unlock its potential as a leading energy transition hub at the centre of Scotland’s decarbonisation efforts, there is a collective effort to support greater connectivity across the North of Scotland. In partnership with community groups, there is an ambition to secure investment to dual the A90 road between Ellon and Peterhead, alongside the restoration of the rail services to Peterhead and Fraserburgh.

Investment in greater connectivity between Peterhead and key Scottish cities provides an opportunity for Peterhead to attract and retain the wider workforce required to deliver these projects and increase the extent to which this Vision can successfully deliver on these benefits.

Housing

Providing and developing accommodation to support the delivery of the significant pipeline of projects and house the scale of workers required, creates an opportunity for Peterhead. Increased and improved housing provision will generate spend within the local and regional supply chain, as well as enabling transient workers to live locally and boost the local economy.



Photo: Aberdeenshire Council

As a key opportunity area within ‘Peterhead 2040’, several of the Forum companies, including SSEN Transmission, have internal housing strategies to accommodate the workforce required to deliver the scale of projects in the North East of Scotland, whilst supporting the housing needs of local communities. With the necessary investment, developers operating in the region will be able to provide high quality housing for workers to efficiently deliver the pipeline of projects whilst providing a housing legacy for the Peterhead community.

Direct and catalytic investment in skills, supply chain and infrastructure, alongside support from the local and business communities and buy-in from the Scottish and UK Governments, will lead to the economic transformation of Peterhead and ensure long-term prosperity for generations to come.



Prosperity

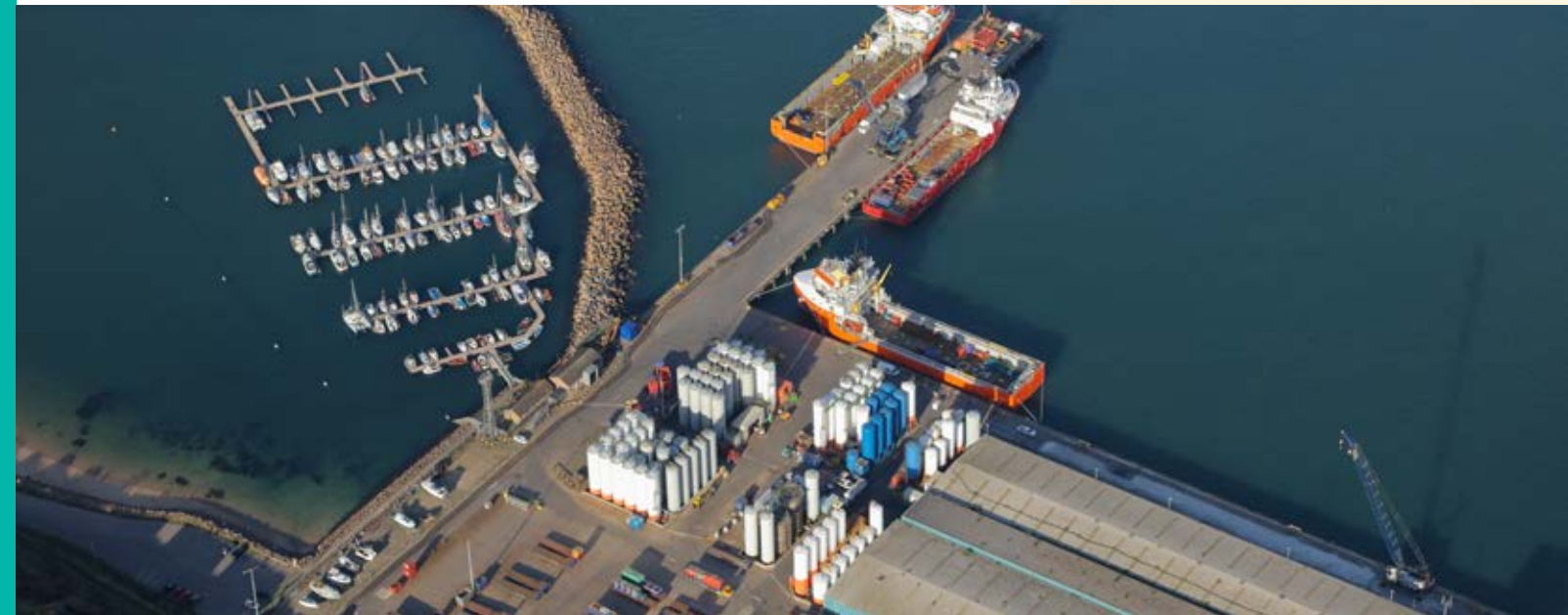
The Path Forward

The ongoing collaboration across the community, local supply chain, and industry supported by the Forum, continues to enable Peterhead to realise its potential to be a leading energy hub hosting a cluster of renewable and low-carbon energy projects and infrastructure, helping to decarbonise Scotland's economy.

With many of the key industry players having historic ties in Peterhead, a unique environment of collaboration has been cultivated alongside a culture of adaptability and delivery through the fishing and oil and gas industries, creating a wealth of skills, expertise, and sector knowledge. These conditions place Peterhead at the forefront of the energy transition with the ability to deliver a strong pipeline of projects, with its strategic location lending itself particularly well to offshore wind, CCS, and hydrogen technology opportunities, playing a crucial role in the decarbonisation of Scotland.

The Forum's collective effort to attract and secure inward investment for several key areas, including the development of skills, education and enterprise to further develop and retain skills, alongside infrastructure improvements to achieve greater connectivity, accessible housing for the workforce required to deliver the pipeline of projects, and investment to enhance supply chain infrastructure, will have a transformational effect on Peterhead, ensuring the town is prepared to deliver.

The Vision supports the UK and Scottish Government's clear targets for offshore wind development, with progress and planning underway across INTOG and ScotWind projects. To ensure that Peterhead can progress with CCS technology, including Acorn and the Scottish Cluster, targeted Government support is critical for progression.

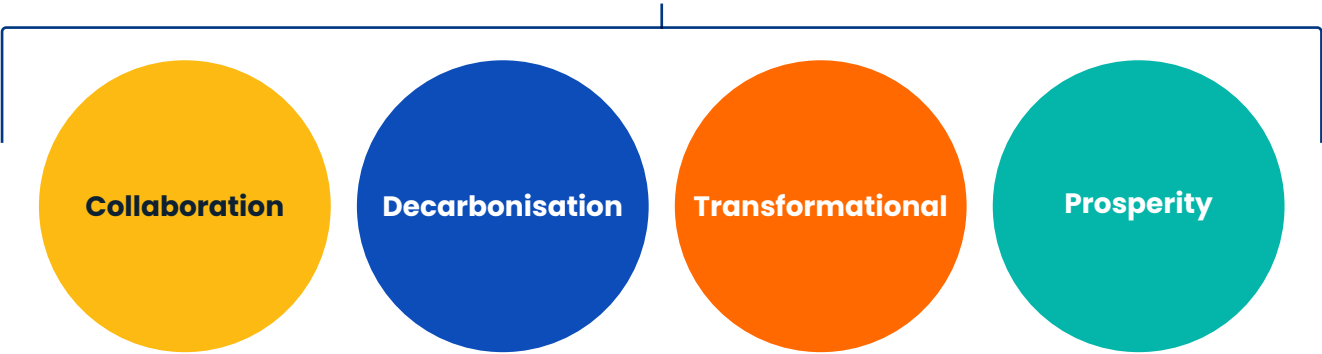


Continued understanding and support for the energy transition across Peterhead’s community and industrial base is an important enabler for this Vision.

The Forum’s collective efforts to nurture and maintain this support and **collaboration**, will ensure that Peterhead is able to leverage its unique opportunity to become the centre of Scotland’s **decarbonisation** efforts and meet Net Zero ambitions.

Support of this nature alongside continued engagement and discussion from key stakeholders within the industry, will allow the energy transition to have a **transformational** impact on the Peterhead community, helping to address regional wealth disparities, enabling wider economic development, and driving **prosperity** for generations to come. This is of particular importance to the Trust Port and the wider Forum, with the overarching purpose of building a lasting legacy for future generations.

Proximity



Contact Us

Please get in touch, we would love to work with you!

Peterhead Energy Transition Forum

Coordinator

Keith Mackie, Head of Business Development –
Energy Transition at Peterhead Port Authority
info@peterheadport.co.uk
www.peterheadport.co.uk

ASCO

info@ascoworld.com

Dales Engineering Services

sales@dalesengineering.co.uk

ETZ Ltd

information@etzltd.com

JBS Group

info@wearejbs.com

Maritime Developments Ltd

hello@maritimedevolutions.com

Score Group

score-group.com/contact
+44 (0)1779 480000

Scottish Maritime Academy (part of NESCol)

As an employer: Ch.Bell@nescol.ac.uk
For students: studentadvice@nescol.ac.uk

SSE Thermal

Head of Stakeholder Engagement and Public Affairs
jade.fernandez@sse.com

SSEN Transmission

Procurement and Commercial: supplier@sse.com
Stakeholder Engagement:
Transmission.Stakeholder.Engagement@sse.com

Storegga

corporate.affairs@storegga.earth
theacornproject@weareaspect.com

Aberdeenshire Council

Invest Aberdeen

To find out more about why the North East of Scotland might be the location for your company or to experience the area for yourself, get in touch with Invest Aberdeen.
investaberdeen.co.uk
enquiriesIA@investaberdeen.co.uk
Invest Aberdeen office: +44 (0)1224 067766

Delivery Team

Aberdeenshire Council, Woodhill House,
Westburn Rd, Aberdeen. AB16 5GB
delivery@aberdeenshire.gov.uk
+44 (0)1467 536 230

Economic Development

Place Economy Executive
Aberdeenshire Council, Buchan House,
St Peter St, Peterhead. AB42 1QF
econdev@aberdeenshire.gov.uk
+44 (0)1467 535 767

Scottish Development International and Scottish Enterprise

www.sdi.co.uk
www.scotent.co.uk
investment@scotent.co.uk



As the world moves towards decarbonisation, Peterhead will once again use its unique position to harness the power of the North Sea to drive economic growth and shape the energy transition.

– The Forum



Peterhead Energy Transition Vision

This report has been prepared by the Peterhead Energy Transition Forum alongside BiGGAR Economics, Opergy, and Mearns & Gill

2025 – 2040